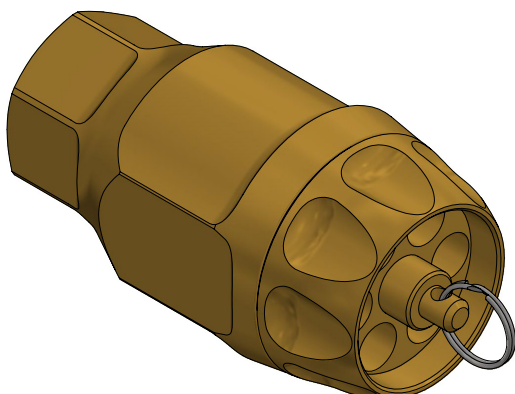




Automatic Drain Valve

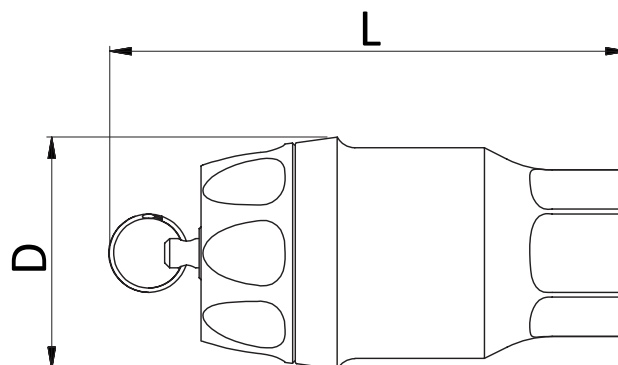
The Automatic Drain Valve (ADV) is an efficient, reliable and compact drain valve. The ADV, in comparison to similar drain valves, does not leak during normal operation. The ADV has been tested for use at pressures up to 40 bar (PN40).



Material:

Body:	Brass
Spring:	Stainless steel (316/316L)
Plunge:	Polyoxymethylene

When a system with the ADV operates with a pressurized flow of more than the given closing pressure, the ADV will automatically close. After the system has been deactivated, and the static pressure drops below the given opening pressure, the ADV will open and drain the fluid.



DIMENSIONAL DATA

Model	L [mm]	D [mm]	Connection	Weight [kg]
ADV-20	105	Ø48	3/4" BSP Female	0,5

All parts have been selected for reliable and trouble free service using corrosion resistant materials for low maintenance.

PERFORMANCE DATA

Model	Flow rate	Opening pressure	Closing pressure
ADV-20 1B	<20 lpm	<1 bar	>0,5 bar
ADV-20 2B	<20 lpm	<2 bar	>1,5 bar

Product Features

- Reliable draining mechanism
- Manual functional test handle
- Uncomplicated maintenance/cleaning