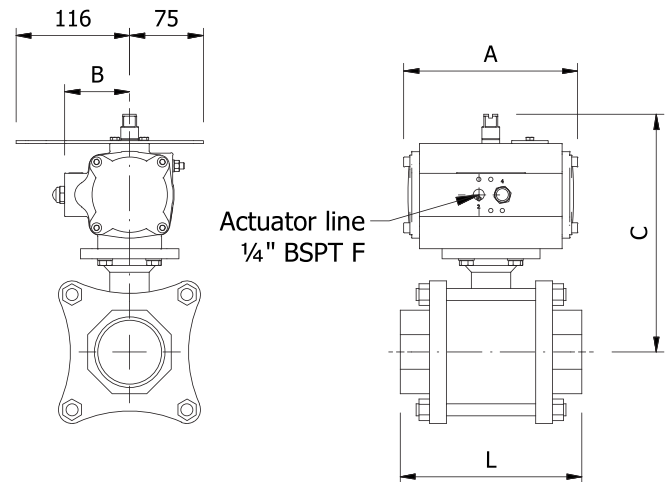
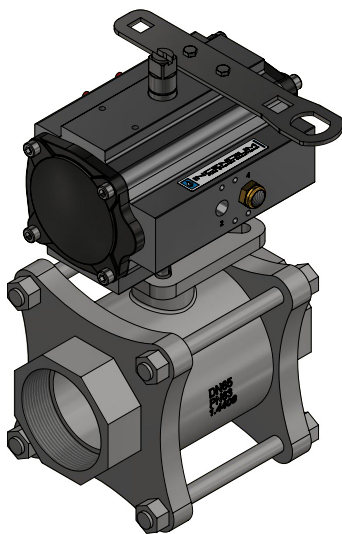




Automatic Foam Valve

The Incendium Automatic Foam Valve (IAFV) is designed for use with either a balanced pressure proportioner or with a bladder tank proportioner. The valve consists of a 316 stainless steel ball valve and an approved, corrosion resistant actuator. The IAFV operates by water pressure from the main waterline or from the water motor alarm port in a fire sprinkler system.



DIMENSIONAL DATA

Model	Length [mm]				Connection Valve	Weight [kg]
	A	B	C	L		
IAFV-20	142	30	145	80	3/4" BSPP F	2,1
				75	Ø26,9mm WE	
IAFV-25	142	30	148	90	1" BSPP F	3,0
				85	Ø33,7mm WE	
IAFV-40	162	37	179	120	1 1/2" BSPP F	4,6
				140	Ø48,3mm WE	
IAFV-50	162	37	186	140	2" BSPP F	5,6
				150	Ø60,3mm WE	
IAFV-65	266	56	261	185	2 1/2" BSPP F	6,5
				270	2 1/2" Grooved	
IAFV-80	266	56	268	205	3" Grooved	17,8
				180	Ø88,9mm WE	

WE=Weld End

Material:

Actuator House: Anodized Aluminum*
 Actuator House lids: Epoxy painted Aluminum*
 Actuator Internals: Nickel plated Steel*
 Valve: Stainless steel (316)

*Stainless Steel 316 available as option

Product Features

- Stainless Steel foam concentrate ball valve
- Full Stainless Steel 316 actuator available
- Designed to meet to requirements of VdS and FM
- Approvals: Det Norske Veritas (DNV), Germaische Lloyd, Lloyds Resiter of Shipping (LRS)

All parts have been selected for reliable and trouble free service using corrosion resistant materials for low maintenance.

The IAFV operates between 2 - 16 bar pressure. The actuator is equipped with a manual override handle that also is used to reset the valve manually after operation.