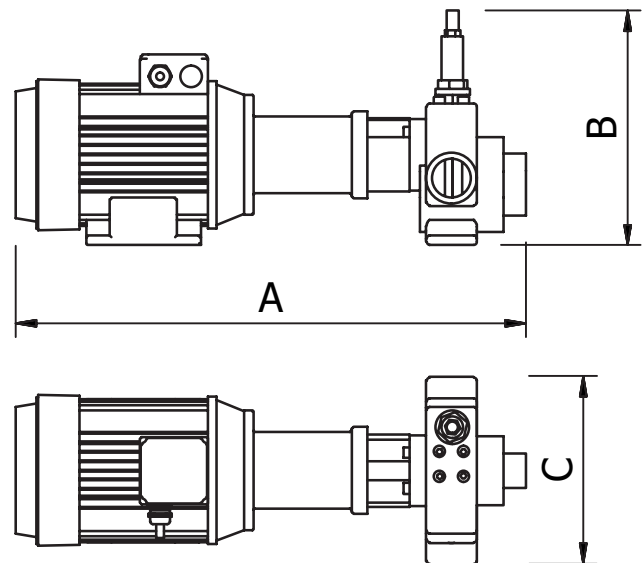
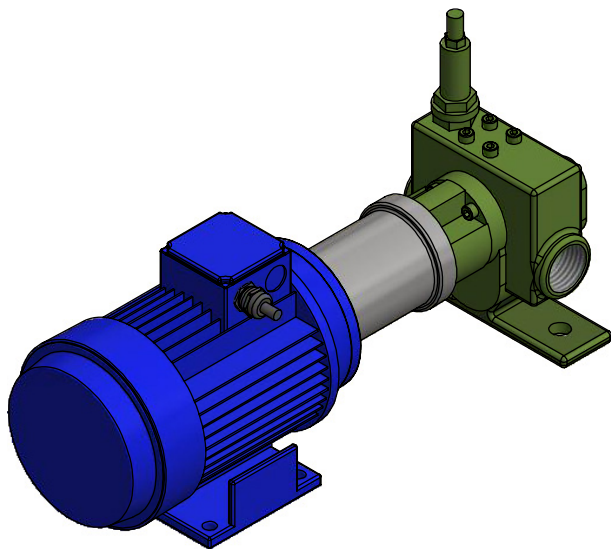




## Foam Gear Pump

The Incendium Foam Gear Pump (BK) is a pump of Swedish make, suitable for pumping of thixotropic liquids such as foam concentrates with high viscosity. The pump is self priming and has a lift height of up to 3 m.

The BK should be combined with a pump proportioner such as the Incendium IPP or IPPW.



### DIMENSIONAL DATA

Model	Length [mm]			Connection
	A	B	C	
BK 1	618	282	140	¾" F
BK 1:02	618	282	140	¾" F
BK 2	1000	344	400	1 ¼" F
BK 2:16	1000	344	400	1 ½" F
BK 3*	1000	344	400	2 ½" F
BK 4*	1200	550	550	DN80 PN16

\*Mounted on base plate

All parts have been selected for reliable and trouble free service using corrosion resistant materials for low maintenance.

### Material:

Housing:	Cast Iron (GG25)
Pump Wheel:	Cast Iron (GG25)
Axles:	Carbon Steel (C45E)
Bearings:	Carbon Graphite
Seals:	Viton

### Product Features

- Self priming
- Connections available from ¾" to DN80
- Built in overflow safety valve
- Dual direction (single direction for safety valve function)
- IP55 with option for up to EEx de II CT4

### PERFORMANCE DATA

Model	Capacity range [l/min]	Differential pressure range* [bar]	Rotation speed** [rpm]	Engine effect*** [kW]
BK 1:02	17-35	Up to 16	700-1450	0,55-4
BK 1	35-70	Up to 16	700-1450	0,55-4
BK 2	56-112	Up to 16	700-1450	0,55-4
BK 2:16	112-220	Up to 16	700-1450	1,5-11
BK 3	224-448	Up to 16	700-1450	3-18,5
BK 4	490-1000	Up to 16	700-1450	4-37

\*To be specified on order since flow capacity depends on counter pressure and viscosity

\*\*900 rpm for optimal performance

\*\*\*Voltage is 230V to 690V