

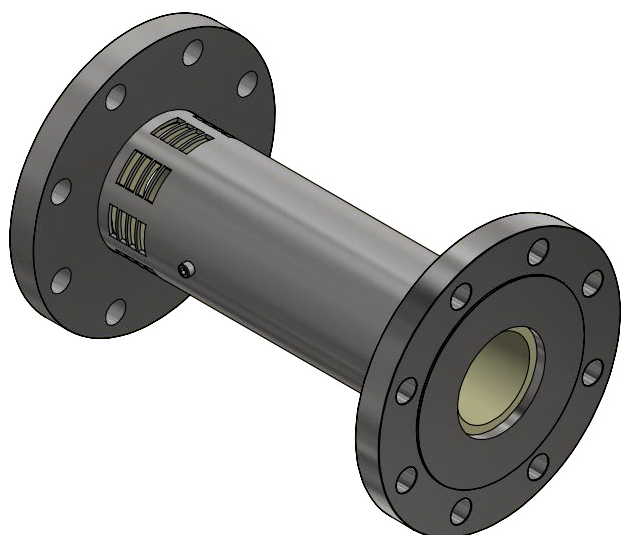


## High Back Pressure Foam Generator

The Incendium High Back Pressure Foam Generator (TSR) is a generator intended for fixed installation. It is generally used for subsurface and semi-subsurface foam application through a BISS unit or similar in storage tanks containing flammable liquids.

The generators are used with most types of foam systems like foam pumps, bladder tanks or in-line proportioners. The TSR is designed to introduce air into a water/foam-concentrate mix and is made according to customer specific data.

The TSR produces a uniform slow draining foam of a nominal expansion ratio at 4:1.

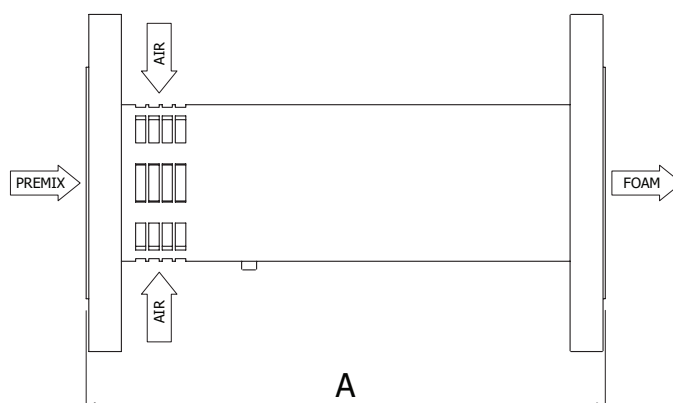


### Material:

Body:	Stainless steel (316/316L)
Nozzle:	Polypropylene
Flange:	Stainless steel (316/316L)

### Product Features

- Stainless steel body
- Easy to install
- Maintenance free design
- Suitable vertical or horizontal installation
- Different types of connections available (flanged or grooved as standard)
- Designed and tested according to EN 13565-1, EN13565-2 chapter 5.2.3.2



### DIMENSIONAL DATA

Model	Length A [mm]	Connection	Weight [kg]
TSR-50	210	DN50 PN16 / 2" ANSI 150lbs	9
TSR-80	280	DN80 PN16 / 3" ANSI 150lbs	13
TSR-100	352	DN100 PN16 / 4" ANSI 150lbs	16

All parts have been selected for reliable and trouble free service using corrosion resistant materials for low maintenance.

### PERFORMANCE DATA

Model	Inlet pressure [bar]	Water Capacity [l/min]*	Foam Expansion ratio **
TSR-50	6-16	100-750	4:1
TSR-80	6-16	750-1400	4:1
TSR-100	6-16	1400-2400	4:1

\* at 7 bar

\*\* Depending on foam concentrate type

The TSR allows a high back pressure of up to 40% of inlet pressure.