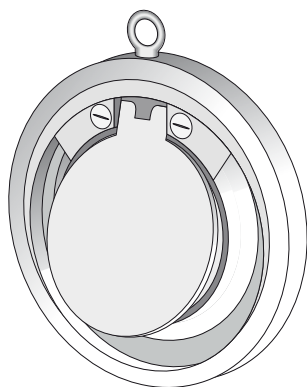
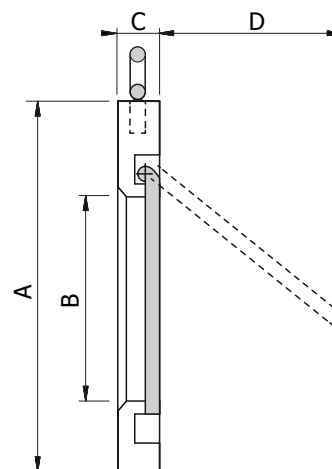


Swing Check Valve

The Swing Check Valve (SCV) is a check valve with or without spring load for mounting between flanges. It is made with the highest quality corrosive resistant stainless steel and is therefore highly suitable for use in foam concentrate lines.

The SCV is often used in water lines and bladder tank proportioning systems. The preferred mounting position is horizontal in a vertical pipe line with the opening mechanism up.



Material:

House:	Stainless Steel (316/316 Ti)
Disc:	Stainless Steel (316 Ti)
Spring*:	Stainless steel (316 Ti)
Seals:	Viton, NBR, EPDM or PTFE
*If present	

Product Features

- Allows for a non constraining seal without spring load
- High seal security
- Cost effective design
- Maintenance free design
- Low weight
- Working temperature range -25°C to +150°C
- Working pressure PN16

DIMENSIONAL DATA

Model	Length [mm]				Weight [kg]
	A	B	C	D	
SCV-32	85	18	15	22	0,5
SCV-40	95	22	16	25	0,8
SCV-50	109	32	14	37	1,0
SCV-65	129	40	14	50	1,4
SCV-80	144	54	14	61	1,8
SCV-100	164	70	18	77	2,9
SCV-125	195	92	18	98	3,9
SCV-150	220	112	20	120	4,5
SCV-200	275	154	22	160	7,5
SCV-250	331	192	26	190	13
SCV-300	386	227	32	220	23

All parts have been selected for reliable and trouble free service using corrosion resistant materials for low maintenance.