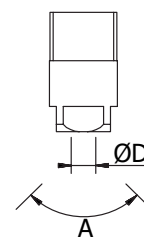
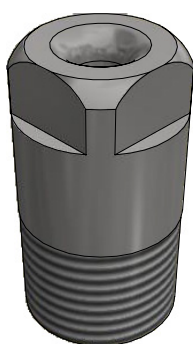




### Wide Angle Spray Nozzle

The Wide spray nozzles gives a wide angle spray with several features and benefits. Made for deluging combustion materials and storage tanks for fire suppression/prevention. It is ideal for fire fighting purposes using water and foam as well as cooling of metal surfaces or other materials.

It can also be used for creating and dispersing drops in chemical reaction processing or for dust control in processing of bulk ores, coal, lime, stone, sand and gravel.



#### Material:

Body\*: Brass

\*Optional material: Mild Steel or Stainless steel

#### Product Features

- Wide-angle solid cone-shaped spray pattern with round impact area and spray angle of 120° at 0.7 bar
- Unique vane design with large flow passages provides superior control and uniform distribution
- Removable caps and vanes for easy inspection and cleaning on most models
- Removable vane has location marks for proper positioning after cleaning
- Set screw secures vane in the nozzle to ensure it is not dislodged by vibration
- For installations with space limitations, right angle mounting options allow for mounting at a 90° angle

All parts have been selected for reliable and trouble free service using corrosion resistant materials for low maintenance.

#### DIMENSIONAL DATA

Model	A [°] @			ØD [mm]	Connection*
	0,4 bar	0,7 bar	6 bar		
IHH-14W	114	120	103	3,6	¼" BSP M
IHH-17W	114	120	103	4	⅜" BSP M
IHH-20W	114	120	104	4,4	⅜" BSP M
IHH-24W	114	120	104	4,8	⅜" BSP M
IHH-27W	114	120	106	5,2	⅜" BSP M
IHH-30W	114	120	108	5,6	½" BSP M
IHH-35W	114	120	108	6,0	½" BSP M
IHH-40W	114	120	108	6,4	½" BSP M
IHH-45W	114	120	110	6,4	½" BSP M
IHH-50W	114	120	112	6,7	½" BSP M
IHH-60W	115	120	112	9,9	¾" BSP M
IHH-110W	117	120	117	13,1	1" BSP M
IHH-160W	118	121	119	15,5	1 ¼" BSP M
IHH-240W	119	124	119	18,5	1 ½" BSP M

\*Optional NPT thread

#### PERFORMANCE DATA

Model	Capacity [lpm] @								
	0,4 bar	0,5 bar	0,7 bar	1 bar	1,5 bar	2 bar	3 bar	4 bar	6 bar
IHH-14W	4,1	4,6	5,3	6,3	7,6	8,6	10,4	11,9	14,3
IHH-17W	5	5,6	6,5	7,6	9,2	10,5	12,7	14,4	17,4
IHH-20W	5,9	6,5	7,6	9	10,8	12,4	14,9	17	20
IHH-24W	7,1	7,8	9,1	10,8	13	14,8	17,9	20	25
IHH-27W	8	8,8	10,3	12,1	14,6	16,7	20	23	28
IHH-30W	8,8	9,8	11,4	13,5	16,2	18,5	22	25	31
IHH-35W	10,3	11,4	13,3	15,7	18,9	22	26	30	36
IHH-40W	11,8	13,1	15,2	18,0	22	25	30	34	41
IHH-45W	13,3	14,7	17,2	20	24	28	34	38	46
IHH-50W	14,7	16,3	19,1	22	27	31	37	42	51
IHH-60W	21	23	27	31	37	42	51	58	69
IHH-110W	38	42	49	57	69	78	93	106	126
IHH-160W	56	62	71	83	100	113	135	154	184
IHH-240W	84	92	107	125	150	170	203	230	275