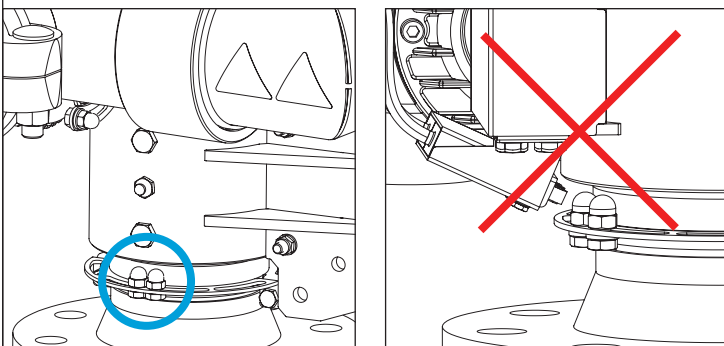


Instruction:

- Mount facing centre of protected area.
- Rotate (2) for rotation to allow for installation of bolts. Use manual override handle (3) or 17mm socket wrench. (Remove tools after use)

DO NOT rotate monitor to a point which makes the limit switches get in contact with domed cap nuts as seen below



- Junction box without mount is to be placed no longer than 1m from monitor. Cable glands pointing down.
- Junction box with mount is to be fixed under connecting flange with one of the monitors bolts.

PARTS LIST, STANDARD

POS	RCM DIN/ANSI
1	Monitor unit
2	Manual override nut <i>CAUTION: Remove tools after use</i>
3	Manual override handle: <i>CAUTION: Refit with wing nut to original mount location after use</i>
4	Junction Box (Not pictured)

PARTS LIST, INSTALLATION KIT (OPTIONAL)

POS	RCM DIN/ANSI
A	Bolt DIN: RCM-80,-100: M16. RCM-150: M20 ANSI: RCM-80,-100: UNC 5/8". RCM-150: UNC 3/4".
B	Gasket (Depending on monitor size)
C	Washer (Depending on monitor size)
D	Nut DIN: RCM-80,-100: M16. RCM-150: M20 ANSI: RCM-80,-100: UNC 5/8". RCM-150: UNC 3/4"

MAX HEIGHT OF BOLTS OVER MONITOR FLANGE

Model	RCM-80 DIN	RCM-80 ANSI	RCM-100 DIN	RCM-100 ANSI	RCM-150 DIN	RCM-150 ANSI
Height [H]	20mm	35mm	20mm	40mm	25mm	55mm