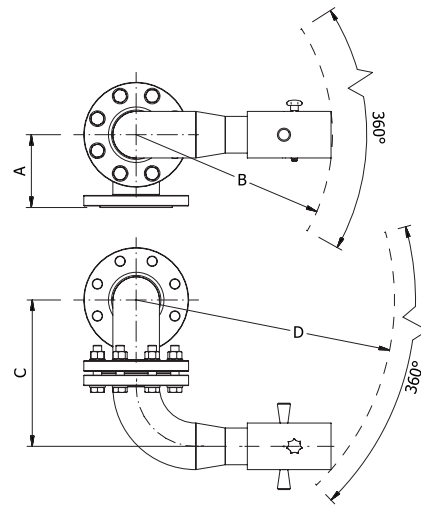
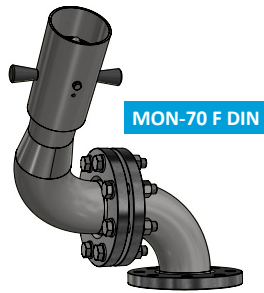




## Manually operated fixed nozzle

The manually operated fixed nozzle MON is used in installations where a given area needs to be protected. The MON can be maneuvered between fog and jet. In addition the nozzle can be rotated 360° in both vertical and horizontal alignment giving the customer the option for precise extinguishing operation.



### Application

The MON can be used in a large range of applications including Jetties, Refinery installations, Aircraft hangars, etc.

### Material:

Body: Stainless Steel (316/316L)

Nozzle: Stainless Steel (316/316L)

### Product Features

- Stainless steel body and nozzle
- Fog/Jet adjustable
- Rotation/Elevation: 360°
- Standard spray angle 90°
- Optional spray angle 170°
- Working pressure 4 to 16 bar
- Optional self-inducting nozzles available at 1% and 3%
- Designed according to EN 13565-1

### DIMENSIONAL DATA

| Model     | A* [mm] | B* [mm] | C* [mm] | D* [mm] | Connection<br>DIN / ANSI | Weight* [kg] |
|-----------|---------|---------|---------|---------|--------------------------|--------------|
| MON-70 F  | 140     | 375     | 280     | 495     | DN80 PN 16 / 3" 150 lbs  | 18           |
| MON-110 F | 180     | 400     | 360     | 565     | DN100 PN16 / 4" 150 lbs  | 25           |
| MON-140 F | 255     | 590     | 510     | 840     | DN150 PN16 / 6" 150 lbs  | 45           |

\*Approximate measurements. Contact Incendium for monitor specific drawing.

All parts have been selected for reliable and trouble free service using corrosion resistant materials for low maintenance.

### PERFORMANCE DATA

| Model   | Flow rate* [lpm] | Pressure [bar] |
|---------|------------------|----------------|
| MON-70  | Up to 2600       | 4-16           |
| MON-110 | Up to 6000       | 4-16           |
| MON-140 | Up to 10000      | 4-16           |

\*Depending on available pressure.

### RANGE OF JET IN METERS MON\*

