

HSSS Semi-Subsurface Foam Injection Device

Description

The SKUM HSSS Semi-Subsurface system is a foam injecting device that delivers low expansion foam to the liquid surface of a storage tank by a flexible hose. When the system is pressurized, the hose unfolds into the tank and rises to the level of the liquid. The HSSS unit also includes a sealing membrane that operates as a check valve by preventing the stored liquid from flowing back and acting as a burst disc when the system is pressurized.

Application

The SKUM HSSS Semi-Subsurface system is designed for use in storage tanks containing water soluble flammable liquids or hydrocarbons, or applications where fuel pick-up by foam is not acceptable and expanded foam must be delivered to the surface.

Features

The SKUM HSSS Semi-Subsurface system has the following features:

- Direct surface foam delivery, regardless of the tank liquid level
- Tell-tale device for leakage warnings
- Air bleed device
- Stainless steel body
- Built-in stainless steel/PTFE sealing membrane construction
- IEC/TS 60079-32-1:2013 and ISO 8031 verified antistatic polyamide hose
- Large range capacity of up to 2500 Lpm
- Suitable for tank heights of up to 28 m
- Suitable for polar solvent liquids and hydrocarbons

Connections

- Inlet/outlet: flanged compatible with DIN PN16 or ANSI 150 lb
- The HSSS unit must be installed with a proper earth connection



Optional Components

Check valve, expander, and gate valve.

Listings and Approvals

KFSD (Kuwait)

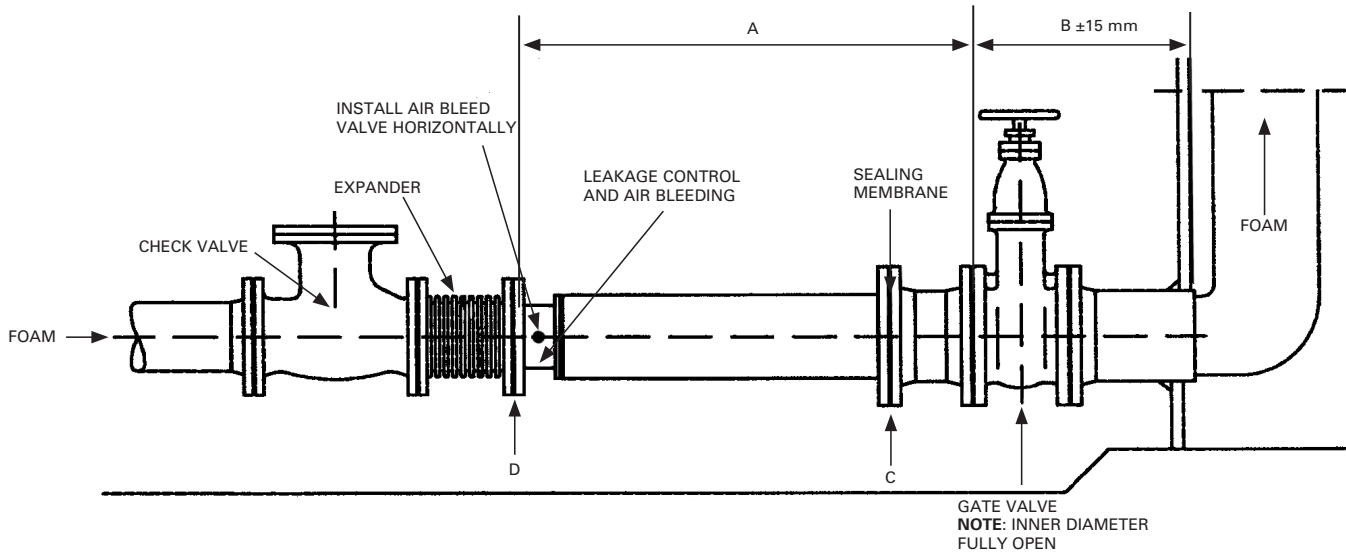
Ordering Information

When ordering, specify the following information:

- Part number
- Size
- Flange type: DIN or ANSI
- Length of hose and tank height

Part No.	Description	Hose Length
147208111	HSSS-80/100 SM DIN PN16	11 m
147208214	HSSS-80/100 SM ANSI 150 lb	11 m
147210113	HSSS-100/150 SM DIN PN 16	20 m
147210216	HSSS-100/150 SM ANSI 150 lb	20 m
147215117	HSSS-150/200 SM DIN PN 16	28 m
147215219	HSSS-150/200 SM ANSI 150 lb	28 m
547127208	Replacement hose HSSS-80/100	11 m
547127214	Replacement hose HSSS-80/100	10 m
547127310	Replacement hose HSSS-100/150	20 m
547127317	Replacement hose HSSS-100/150	15 m
547127415	Replacement hose HSSS-150/200	28 m
547127422	Replacement hose HSSS-150/200	21 m

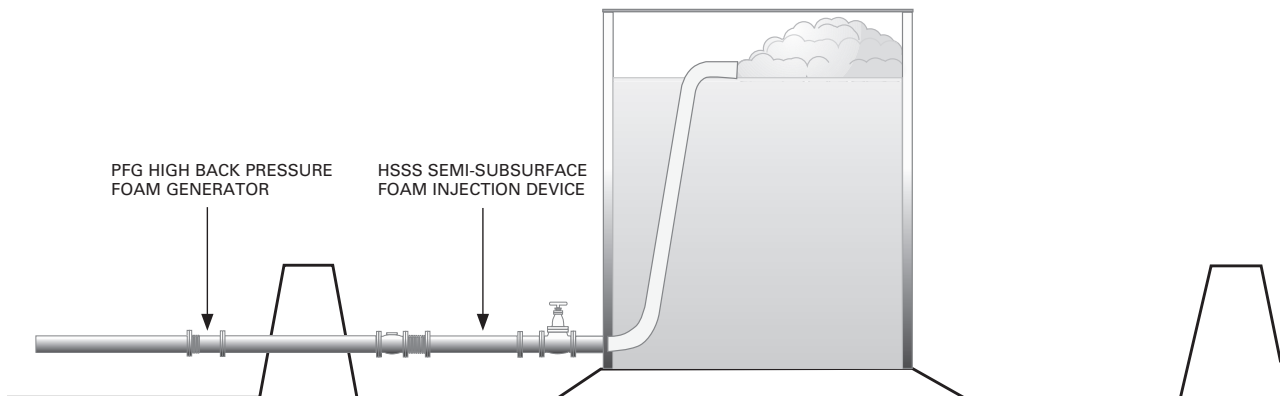
Typical Tank Base Installation



Installation Dimensions

Dimension	HSSS-80/100	HSSS-100/150	HSSS-150/200
A	805 mm	960 mm	1100 mm
B	490 mm	510 mm	530 mm
C Connection Outlet	100 DIN PN 10/16 or 4 in. ANSI 150 lb	150 DIN PN 10/16 or 6 in. ANSI 150 lb	200 DIN PN 10/16 or 8 in. ANSI 150 lb
D Connection Inlet	80 DIN PN16 or 3 in. ANSI 150 lb	100 DIN PN16 or 4 in. ANSI 150 lb	150 DIN PN16 or 6 in. ANSI 150 lb

System in Operation



Technical Data

Operating Specifications

	HSSS-80/100	HSSS-100/150	HSSS-150/200
Maximum Water Capacity	750 Lpm	1400 Lpm	2500 Lpm
Maximum Tank Height	11 m	20 m	28 m
Maximum Back Pressure	6 bar	6 bar	6 bar
Maximum Working Pressure	6 bar	6 bar	6 bar
Minimum Opening Pressure	0.4 bar	0.2 bar	0.2 bar
Weight	28 kg	47 kg	70 kg

Material Specifications

	HSSS-80/100	HSSS-100/150	HSSS-150/200
Hose	Antistatic polyamid hose	Antistatic polyamid hose	Antistatic polyamid hose
Hose Container	Stainless steel	Stainless steel	Stainless steel
Foam Sealing Membrane	Stainless steel / PTFE	Stainless steel / PTFE	Stainless steel / PTFE
Spool Piece	Galvanized steel	Galvanized steel	Galvanized steel
Flanges	Galvanized steel	Galvanized steel	Galvanized steel

Note: The converted values in this document are provided for reference only and do not reflect an actual measurement.

SKUM and the product names listed in this material are marks and/or registered marks. Unauthorized use is strictly prohibited.