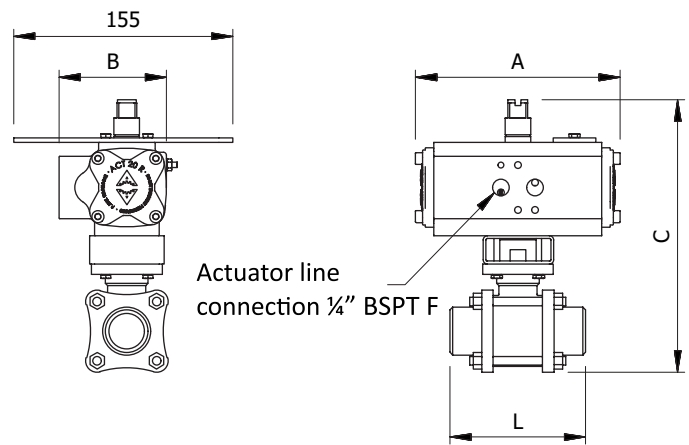
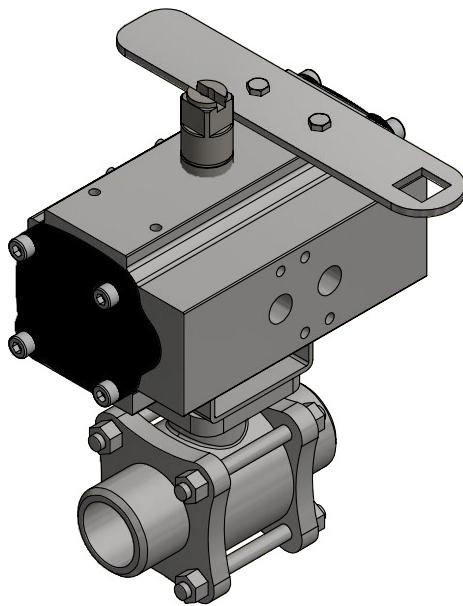




Automatic Foam Valve

The Incendium Automatic Foam Valve (IAFV) is designed for use with either a balanced pressure proportioner or with a bladder tank proportioner. The valve consists of a 316 stainless steel ball valve and an approved, corrosion resistant actuator. The IAFV operates by water pressure from the main waterline or from the water motor alarm port in a fire sprinkler system.



DIMENSIONAL DATA

Model	Length [mm]				Connection Valve	Weight [kg]
	A	B	C	L		
IAFV-20	100	56	143	90	3/4" BSPP F or Ø26,9mm WE	2,1
IAFV-25	145	76	170	100	1" BSPP F or Ø33,7mm WE	3,0
IAFV-40	158	91	205	125	1 1/2" BSPP F or Ø48,3mm WE	4,6
IAFV-50	177	111	240	150	2" BSPP F or Ø60,3mm WE	5,6
IAFV-65	177	111	257	190	2 1/2" Grooved or Ø76,1mm WE	5,6
IAFV-80	196	122	283	220	3" Grooved or Ø88,9mm WE	17,8

WE=Weld End

Material:

Actuator House:	Anodized Aluminum
Actuator House lids:	Epoxy painted Aluminum
Actuator Internals:	Nickel plated Steel
Valve:	Stainless steel (316)

Product Features

- Stainless Steel foam concentrate ball valve
- Designed to meet to requirements of VdS and FM
- Approvals: Det Norske Veritas (DNV), Germaische Lloyd, Lloyds Resiter of Shipping (LRS)

All parts have been selected for reliable and trouble free service using corrosion resistant materials for low maintenance.

The IAFV operates between 2 - 16 bar pressure. The actuator is equipped with a manual override handle that also is used to reset the valve manually after operation.